



Fitness challenge

by Tim Gorton

STUDENTS were put through their paces in a series of fitness activities normally carried out by professional athletes.

The GCSE Year 10 and 11 students were visiting Burnley College to take part in an educational fitness

activity.

PE Teacher Fran Barrett said: "They did it to get an understanding of what athletes go through, the team that is based around an athlete and what they do to make sure the athlete performs at their very best.

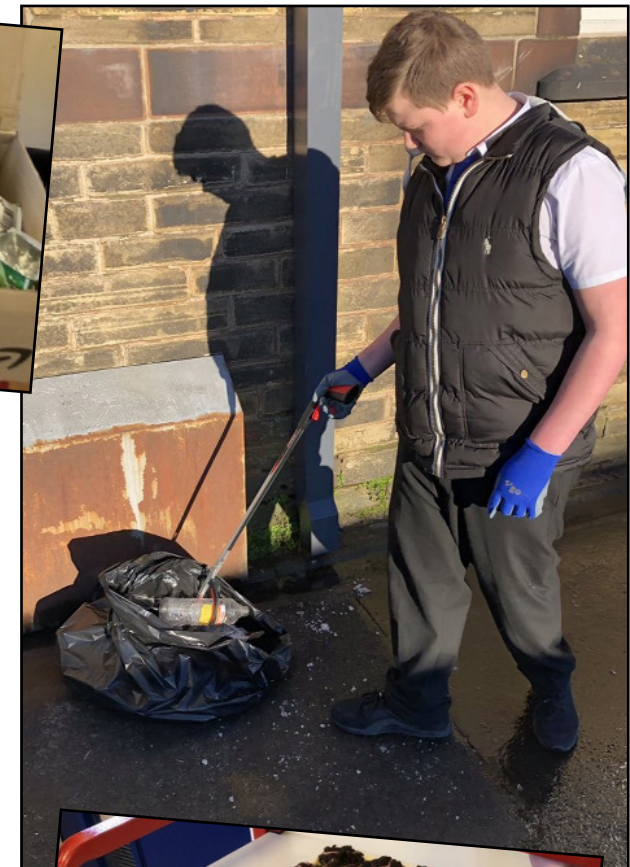
"The benefit of taking part was that our students

got to use facilities that our school hasn't got. It helped the students to get an understanding of how different sporting activities can have different effects on your body."

Our school is currently looking to start its own football team to play against other schools.



Students enjoyed outdoor fun on a snow day as they had target practice throwing snowballs at a points target on a wall and built a snowman



We're going green

by Chloe Lovell

THE 'Blue Planet' is coming to Coal Clough as we aim to become a green school.

We are hoping to achieve Eco School status and leading the campaign to getting our bronze award is Teaching Assistant Rebecca Lambert.

She said: "It is being organised through The LINK – so intervention – and students can access the activities. We hope to achieve a green flag by involving the whole school.

"Our school has registered to become part of the scheme.

"We realise we have

not been as good at recycling as we should be so we have now started collecting printer cartridges, batteries, plastic bottles and crisp packets."

A bake sale was held in school and we raised enough money to buy our first set of spring bulbs.

Rebecca said that they will be planted in the beds at the front of school and will be bright and cheerful colours. School is looking to plant daffodils, snowdrops and tulips and involve different form groups. We will also plant wildflower seeds.

We have already had a mini spring clean

up and the most unusual thing we found was builders' rubbish which had probably blown on to our school site.

Rebecca said: "We are going to be involved in the Great British School Clean when staff and pupils students will not just cleaning the school but also the periphery.

"We are hoping that this will encourage people to use bins more and we are going to make clean ups more regular."

Teaching Assistant Sarah Riley is looking to make a greenhouse in construction and she will be using plastic water bottles.



Fine dining cookery

by Chloe Lovell

IN THE next few months you might notice the school menu getting the Gordon Ramsay touch.

Why?

We are growing edible flowers to enhance the presentation of meals

prepared in cookery classes and served in the dining hall.

We are growing edible cornflowers, nasturtiums and violas.

Teaching Assistant Rebecca Lambert said Coal Clough was also looking to grow herbs in school on the windowsills for use in cookery classes.



Forest school fun

by Chloe Lovell

FOREST schools is a weekly intervention which KS3 students can access.

Coal Clough students regularly visit Swindon Woods in Nelson and Garden-Able allotments also in Nelson.

Rebecca said: "The students partake in activities like bushcraft,

farming and allotment where they plant bulbs, cook on the outdoor pizza oven, willow work and woodwork.

"I love being outdoors, building shelters and cooking over the open fire. Especially when the students make brews."

In bushcraft students get to light fires, cook and bake, make shelters and learn team building skills.

In farming students learn all about lambing, about career links and get to feed the animals.

On the allotment students take part in planting, cook in the outdoor pizza oven, willow weaving and woodwork.

Coal Clough works with Pennine Lancashire Farm to deliver the sessions.



Lego therapy proves a real motivator

by Tim Gorton

LEGO therapy is now being offered in our LINK Room at Coal Clough.

The room opened towards the end of last year for intervention work and the Lego is offered in the group area of The LINK.

Lead LINK instructor Gemma Foster said: "They work as a team in groups of up to three students and take on the roles of engineer, supplier and builder.

"In those teams they take turns in giving

instructions, following instructions and building an object.

"It is done to encourage teamwork, motivation, relationships, confidence, self-esteem and creativity."

Gemma said she thinks the pupils enjoy The LINK room it because it's a calm environment where they can make new friends and socialise and develop new skills.

The Lego therapy is great for the pupils and it helps in so many different ways.



Students see new school taking shape

by Jack McNamara

CONSTRUCTION students got to tour a new school that our Trust is having built in Burnley.

The building started in May 2017 and it is hoped work will be finished by Easter. It will

cost around £1.5million.

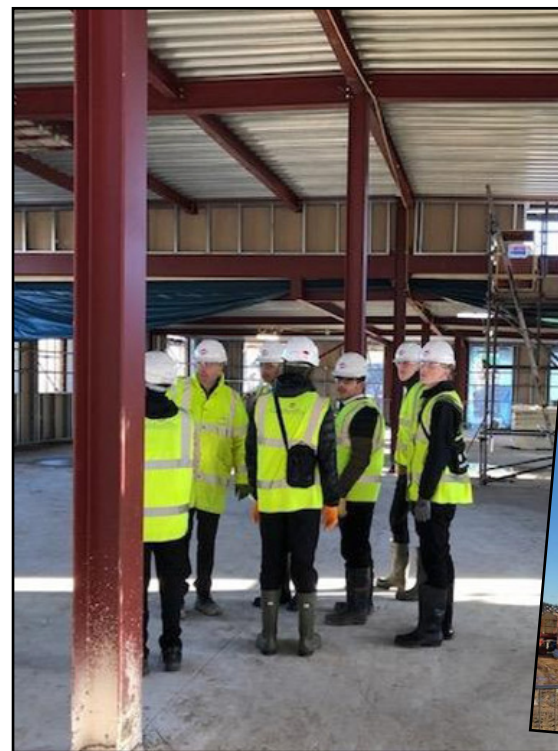
Assistant Headteacher Dillon Yates said: "Galliford Try is funding the school and the company is running a social value plan to give communities and students a chance for an apprenticeship.

"Through this students will have the opportunity

for future work placements."

The company will also be coming into school to work with our students.

The new school will be called The Heights Burnley and will be for primary pupils as well as high school students providing places for around 150.



Afternoon tea

by Chloe Lovell

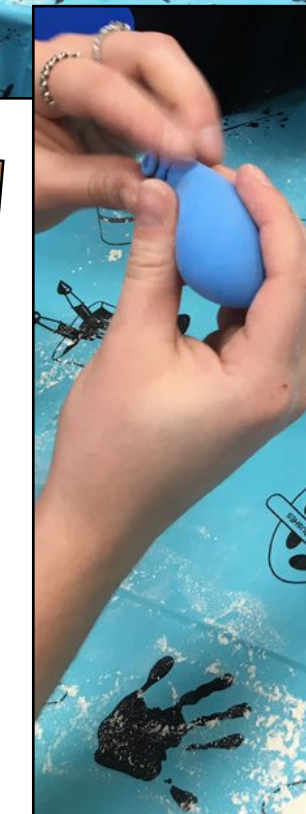
GRANDPARENTS and other relatives were invited into Coal Clough to enjoy an afternoon tea.

Students made tea and coffee while others were waiters and waitresses and delivered the tea to the visitors and also served cakes, buns

and sandwiches.

Our visitors tackled a music quiz from the 60s and we also played special music for our visitors.

I enjoyed being involved in this project because it was nice to speak to the visitors, for me that was quite a challenge but I felt proud of myself that I took part.



Teamwork at The LINK led to the creation of sensory balls