



**OUTREACH  
PROGRAMME AT  
COAL CLOUGH ACADEMY  
2021/2022**



## Overview

The Outreach work at Coal Clough Academy will allow our team to work in partnership with schools and services, to improve the life chances of our young people.

The opportunity to network as a large group of agencies within Early Help, Medical, and Mental Health & Education, allows staff to develop in their professional development and in turn, feel skilled to support young people in their setting.

This service will provide:

- Advice & Support;
- Strategies;
- Specific training to actively manage behaviour;
- Reflective Practice;
- System development with the overall aim of reducing levels of disruptive conduct;
- Improved accessibility to education and learning;
- Enhanced progress and reduction in number of suspensions and permanent exclusions within Lancashire.

At Coal Clough Academy, we pride ourselves on working with the most challenging and vulnerable young people. With strong and consistent outcomes for both academic and non-academic, we can support you.

## Why Choose Us?

Our team of highly skilled staff want to support on the delivery of highly effective CPD that will allow schools, services and providers to enhance the work already done with the most vulnerable, challenging young people.

We will provide preventative measures to engage learners and allow them to succeed in their education journey.

## Timetable of Support Sessions Offered by Coal Clough Academy

We shall be delivering our courses through face to face sessions at Coal Clough Academy.

All courses will be held between 3pm and 5:30pm with a Q&A session opportunity thereafter until 6pm, whereby our skilled staff will be on hand to answer any questions you may have in relation to Alternative Provision. Please note that refreshments will also be provided. Please contact us should you have any specific dietary requirements.

We are happy to provide feedback to schools in relation to delegate attendance and participation if required.

<b>Date</b>	<b>Course</b>	<b>Recommended For</b>
30 <sup>th</sup> September 2021	The Alternative Provision Offer	Senior Leaders, Middle Leaders, Pastoral Leaders & Assistants, SEND Staff
21 <sup>st</sup> October 2021	Reducing Permanent Exclusions with the Alternative Provision Approach	Senior Leaders, Middle Leaders, Pastoral Leaders & Assistants
25 <sup>th</sup> November 2021	Warning signs and what to do with them?	Senior Leaders, Safeguarding Leads, Pastoral Leaders & Assistants
2 <sup>nd</sup> December 2021	Unlocking Relationships	Senior Leaders, Middle Leaders, Safeguarding Leads, Pastoral Leaders & Assistants
27 <sup>th</sup> January 2022	Waves of Intervention	Senior Leaders, Middle Leaders & Teaching Staff
24 <sup>th</sup> February 2022	Solihull – An Insight in to Containment & Attachment	Senior Leaders, Middle Leaders, Pastoral Leaders & Assistants, SEND Staff
31 <sup>st</sup> March 2022	Early Signs of Child Exploitation, focusing on County Lines	Senior Leaders, Middle Leaders, Safeguarding Leads, Pastoral Leaders & Assistants
28 <sup>th</sup> April 2022	Non-Academic Assessment	Senior & Middle Leaders
5 <sup>th</sup> May 2022	(1) Intervention and Prevention	Senior Leaders, Middle Leaders, Pastoral Leaders & Assistants, SEND Staff
26 <sup>th</sup> May 2022	(2) The Power of Everyday Heroes	Senior Leaders, Middle Leaders, Pastoral Leaders & Assistants, SEND Staff
30 <sup>th</sup> June 2022	Building your Model – How to develop Safeguarding for your School?	Senior Leaders & Safeguarding Leads
14 <sup>th</sup> July 2022	Postcode Lottery	Senior Leaders, Middle Leaders, Safeguarding Leads, Pastoral Leads & Assistants

## Overview of Sessions Offered at Coal Clough Academy

### Sessions Delivered by:



Holly Clarke



Chris Whittaker



Dillon Yates



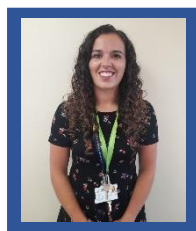
Nathaniel Eatwell



Richard Burberry



Lisa Hill



Demi Hartley

### The Alternative Provision Offer (Delivered by Dillon Yates & Chris Whittaker)

This workshop will look at the offer of alternative provision for pupils struggling within a mainstream setting and how alternative provision can potentially support pupils within your setting who are disengaged, complex behaviours, SEN, SEMH, attendance or complex safeguarding issues.

We will look at the curriculum, provisions, interventions and support that can be put in place within an alternative provision setting and look at case studies around the positive impact alternative provision can have for your pupils.

### Reducing Permanent Exclusions with the Alternative Provision Approach (Delivered by Dillon Yates & Chris Whittaker)

In this workshop, we will look at ways of reducing potential permanent exclusions using an alternative provision approach.

This workshop will look at provisions and interventions that target early intervention for pupils at risk of permanent exclusion and the importance of departments creating a holistic approach in supporting pupils' needs.

### Warning signs and what to do with them (Delivered by Nathaniel Eatwell)

We are trained to see the indicators of abuse; but they often cross over between types of abuse and it can become difficult to determine the root of problems. Using real life examples of how we have used the warning signs to assist colleagues across services to address the impact of issues within families and communities, we will look at gut feelings to blatant physical indicators of abuse we discuss how to record, who to speak to about them and how you can initiate or contribute to wider multiagency working.

### Unlocking Relationships (Delivered by Nathaniel Eatwell & Dillon Yates)

The key to achieving positive relationships is to impart the compassion and empathy we hold for our pupils into our professional expectations, and remembering the dynamics between us and our pupils. We aim to explore how we can develop the positive cultures in our schools that are noted by OFSTED as being key to educational effectiveness: “A positive culture also means creating a positive and empathic environment, in which staff know and care about pupils and share their vision of the goals of the organisation and of the means of achieving these goals.” (Ofsted 2019). Through discussing the events that impact on young people, we explore how this knowledge can unlock the relationships between staff and pupils to generate the positive cultures in which pupils can thrive.

### Waves of Intervention (Delivered by Richard Burbery, Chris Whittaker, Lisa Hill & Demi Hartley)

This workshop will look into the Waves of Intervention Model and how different interventions can be put through this model and utilised within schools. There will be an opportunity to share good practice and interventions that schools implement within each wave and the students that are given support and intervention.

There will be a large focus on Wave 1 Quality First Teaching and how it can be brought in to lesson planning. We will look at points that one might consider using within the classroom which can support students with different needs and complexities. There will also be the discussions around the effective utilisation of support staff within the classroom, essential to ensuring quality first teaching is effective in the classroom.

### Solihull: An Insight in to Containment & Attachment (Delivered by Dillon Yates & Lisa Hill)

The Solihull Approach is a UK programme that encourages parents and carers to identify the most important issues in their relationship with their child and to reflect on why things sometimes go well and sometimes do not. It is then easier to identify how to work together with their child.

The Solihull Approach aims to increase emotional health and well-being through both practitioners and parents. It does this through resources and training across the child and family workforce.

Many child and family practitioners from midwives to social workers have been trained in the model. Whole schools have been trained. Some police, firefighters and adult mental health professionals have been trained. Particular features of the Solihull Approach are:

- It is used for workforce development: increases skills and knowledge, consistency and shared language across agencies using the Solihull Approach
- It can be used for early intervention and prevention in the early years, as well as across childhood and into adulthood
- It can be used for everyone in a team e.g. children’s centre, perinatal unit, school (from receptionists to support staff to teachers).
- It provides parenting programmes from conception through to adolescence.
- It has a particular emphasis on including fathers.
- It provides a theoretical framework for working with emotional and behaviour difficulties and provides supporting evidence e.g. for Ofsted

### **Early Signs of Child Exploitation, focusing on County Lines** *(Delivered by Nathaniel Eatwell & Dillon Yates)*

Child Criminal Exploitation is something at the forefront of our minds as education providers. The risks of child exploitation and County Lines are many and it is unfortunate that many of the young people across our areas are vulnerable to the grooming and early stages of exploitation that occur. In this session we look at what those early signs are, how they differ from other indicators of abuse and what are the misconceptions in advice around indicators of exploitation. We will generate an environment where we can discuss things that are going on for attendees in their area's and look at the routes of support and ways to battle this issue on a day to day and wider strategic level.

### **Non-Academic Assessment** *(Delivered by Richard Burberry & Holly Clarke)*

The majority of data analysis focuses on academic data and we may only touch the surface on non-academic assessment through attendance or behaviour scores. So how do we measure non-academic data and how important is it? It is of particular relevance when research tells us that many teachers and young people feel that the development of life skills such as confidence, resilience, motivation are more important than academic qualifications?

This workshop will look at how Coal Clough Academy's Pastoral and SEND Teams have worked collaboratively to establish a system of monitoring and evaluating non-academic assessment. We will look at the importance of non-academic data and why this is crucial within an alternative setting and how it can be utilised within other settings as a whole school tool or using more individualised methods of monitoring and assessment.

### **Intervention & Prevention** *(Delivered by Dillon Yates, Nathaniel Eatwell & Richard Burberry)*

In this workshop we will look at the importance of interventions and the types of interventions needed to prevent escalating behaviours. The workshop will also look at interventions around safeguarding, SEND and attendance in order to support and prevent escalation concerns within these key areas.

### **The Power of Everyday Heroes** *(Delivered by Dillon Yates, Nathaniel Eatwell & Richard Burberry)*

In this workshop we look at the pressures we all face within a mainstream and alternative setting and how working together we can overcome these barriers that resources and time don't allow.

We will look at how creating a holistic approach across departments has an impact on our pupils with the most complex needs.

We will also cover quality first teaching and is this possible in a class of over 30 pupils and how alternative provision can help support and benefit your learners from this.

### **Building Your Model: How to Develop Safeguarding in your School** *(Delivered by Nathaniel Eatwell)*

The model of safeguarding in schools is determined by our own personal settings. In this session we discuss how we have developed our own model, drawing on the skill sets of staff, the development of the team and, most importantly, the nature of the pupils attending our school. We look at existing models of attendees and the methods and means of reflecting on the current systems in place, areas for improvement within them and using analysis tools to think about where the gaps are and how to fill them. Honest discussion around our own contexts and an opportunity to share good practice amongst attendees will enable thorough consideration of the models of care we put in place across our settings.

Postcode Lottery (Delivered by Nathaniel Eatwell)

The environments our young people live in can often seem like an alien landscape to us; standards seem unacceptable; communities seem to breed concerns and the wider ecology of our children and families drives their relationships with us. How many of us have lived or do live in the areas our children grow up? We need to expand our understanding of context to help us grow our empathy and compassion for our pupils. This session will help talk about specific current and historic socio-economic factors in East Lancashire impacting on the Education of our young people

## Course Price List

<u>Course</u>	<u>Price</u>	<u>Booking Platform</u>
The Alternative Provision Offer	<p>Places on our courses are strictly limited to 20 delegates and we anticipate that demand will be high.</p> <p>Our courses are offered at £100.00 plus booking fees per delegate and we are delighted to offer a 20% discount on all multiple bookings.</p> <p>Please enter discount code 'CCA20' when prompted utilising our Eventbrite booking facility.</p> <p>These courses are also available to book as whole school CPD for your school. For further information, please email <a href="mailto:hclarke@coalclough.org">hclarke@coalclough.org</a> or <a href="mailto:scarter@coalclough.org">scarter@coalclough.org</a></p>	<a href="https://www.eventbrite.co.uk/e/the-alternative-provision-offer-tickets-160967471039">https://www.eventbrite.co.uk/e/the-alternative-provision-offer-tickets-160967471039</a>
Reducing Permanent Exclusions with the Alternative Provision Approach		<a href="https://www.eventbrite.co.uk/e/reducing-permanent-exclusions-with-the-alternative-provision-approach-tickets-161210875067">https://www.eventbrite.co.uk/e/reducing-permanent-exclusions-with-the-alternative-provision-approach-tickets-161210875067</a>
Warning signs and what to do with them?		<a href="https://www.eventbrite.co.uk/e/warning-signs-and-what-to-do-with-them-tickets-161211743665">https://www.eventbrite.co.uk/e/warning-signs-and-what-to-do-with-them-tickets-161211743665</a>
Unlocking Relationships		<a href="https://www.eventbrite.co.uk/e/unlocking-relationships-tickets-161212812863">https://www.eventbrite.co.uk/e/unlocking-relationships-tickets-161212812863</a>
Waves of Intervention		<a href="https://www.eventbrite.co.uk/e/waves-of-intervention-tickets-161216094679">https://www.eventbrite.co.uk/e/waves-of-intervention-tickets-161216094679</a>
Solihull – An Insight in to Containment & Attachment		<a href="https://www.eventbrite.co.uk/e/solihull-an-insight-into-containment-attachment-tickets-161216844923">https://www.eventbrite.co.uk/e/solihull-an-insight-into-containment-attachment-tickets-161216844923</a>
Early Signs of Child Exploitation, focusing on County Lines		<a href="https://www.eventbrite.co.uk/e/early-signs-of-child-exploitation-focusing-on-county-lines-tickets-161217290255">https://www.eventbrite.co.uk/e/early-signs-of-child-exploitation-focusing-on-county-lines-tickets-161217290255</a>
Non-Academic Assessment		<a href="https://www.eventbrite.co.uk/e/non-academic-assessment-tickets-161217771695">https://www.eventbrite.co.uk/e/non-academic-assessment-tickets-161217771695</a>
Intervention and Prevention		<a href="https://www.eventbrite.co.uk/e/intervention-prevention-tickets-161218245111">https://www.eventbrite.co.uk/e/intervention-prevention-tickets-161218245111</a>
The Power of Everyday Heroes		<a href="https://www.eventbrite.co.uk/e/the-power-of-everyday-heroes-tickets-161447988279">https://www.eventbrite.co.uk/e/the-power-of-everyday-heroes-tickets-161447988279</a>
Building your Model – How to develop Safeguarding for your School?		<a href="https://www.eventbrite.co.uk/e/building-your-model-how-to-develop-safeguarding-for-your-school-tickets-161448792685">https://www.eventbrite.co.uk/e/building-your-model-how-to-develop-safeguarding-for-your-school-tickets-161448792685</a>
Postcode Lottery		<a href="https://www.eventbrite.co.uk/e/postcode-lottery-tickets-161451133687">https://www.eventbrite.co.uk/e/postcode-lottery-tickets-161451133687</a>